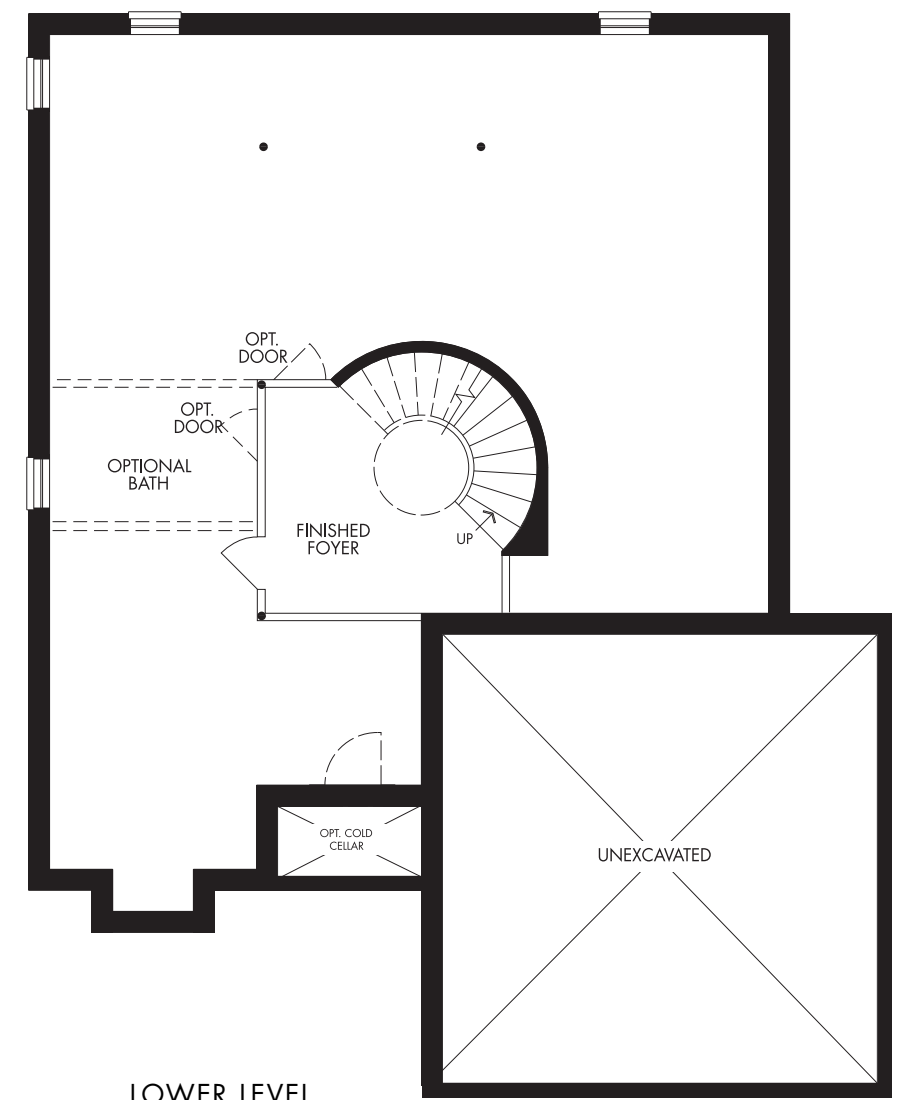
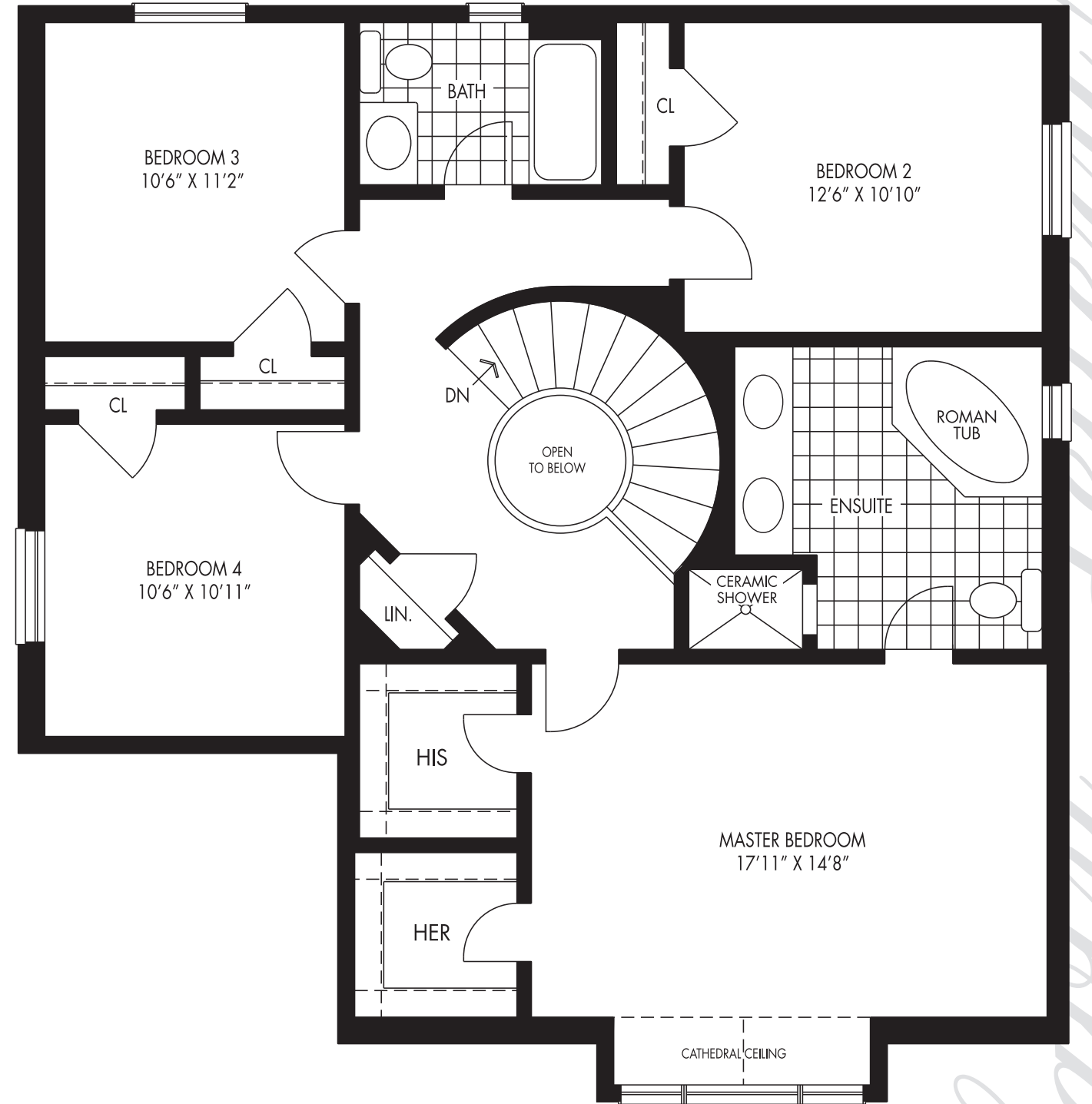
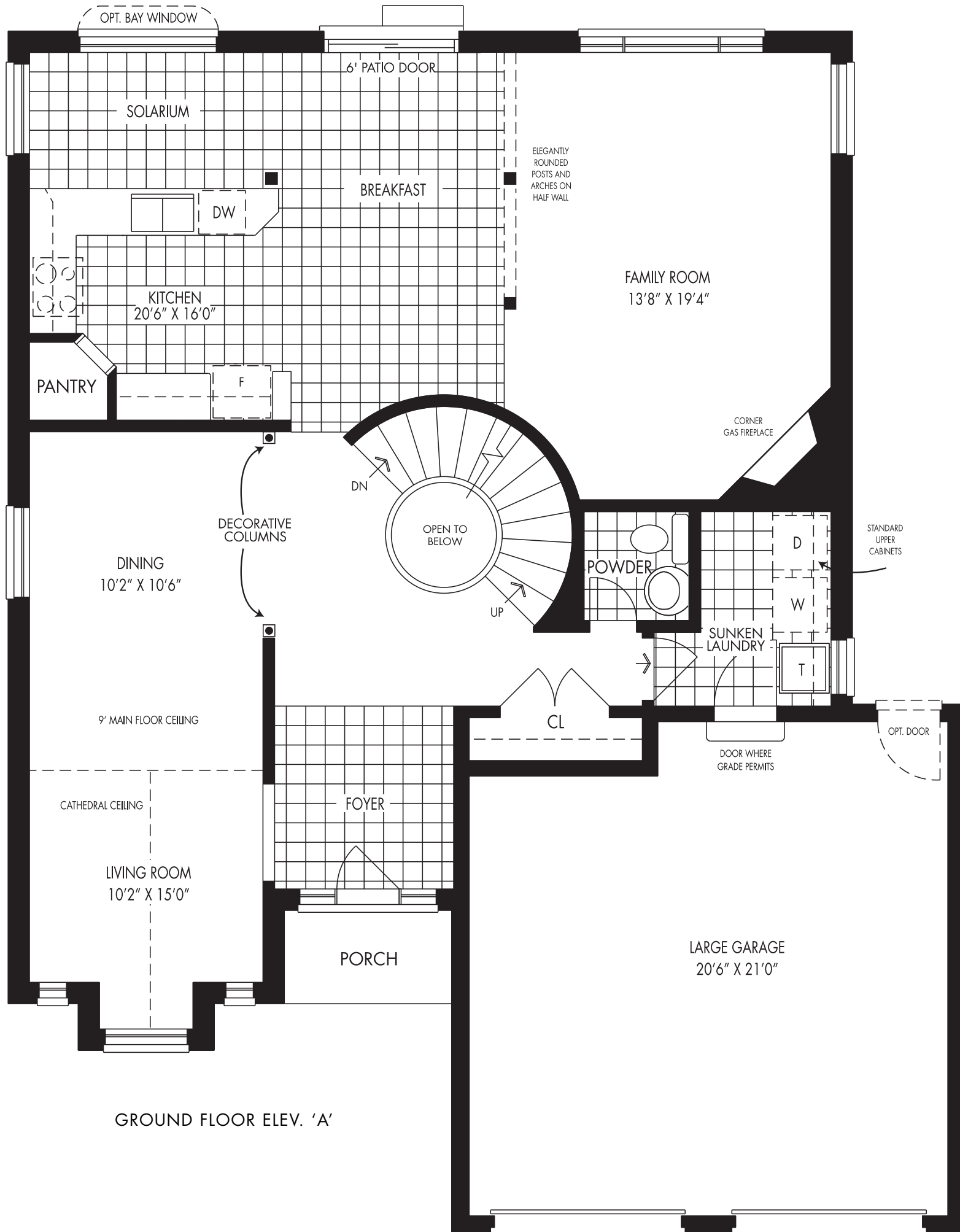




# THE SILVERLEAF

2587 SQUARE FEET  
( 87 SQUARE FEET IN LOWER LEVEL )



The Silverleaf's interior plan reflects the formal character of its balanced elevation. It is a lovely heirloom home with grand gestures such as spacious foyer entrance with dramatic, three-tiered spiral staircase with stunning oak balastrades, formal living and dining rooms with decorative columns.

Casual living takes centre stage as family and friends enjoy the expansive light-filled family room. A cozy corner fireplace, large windows and half wall define the family room yet seamlessly flow to the large eat-in kitchen and solarium. A gourmet kitchen with "U" shaped cabinetry offers plenty of functional counter space and can be expanded into a breakfast bar ideal for casual snacks or serving up a buffet or cocktails. You'll appreciate the functionality of the handy laundry/mud room, double garage, discreet powder room and abundant storage.

Upstairs, enjoy the many options for creating your personal space. The floorplan styles features a grand master retreat with His and Hers closets, pretty sitting area, spa-inspired 5-piece bath and dramatic open to below spaces, and three family bedroom designs with main bath.

Lower Level: There's plenty of room and design options for your dream basement. Consider a future Recreation Room. Billiards. Media Centre. Guest suite. Hobby room. Exercise Room. Wine Cellar. Each plan has the flexibility to grow with your lifestyle needs.



KEDRON  
*Park*

