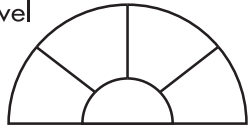




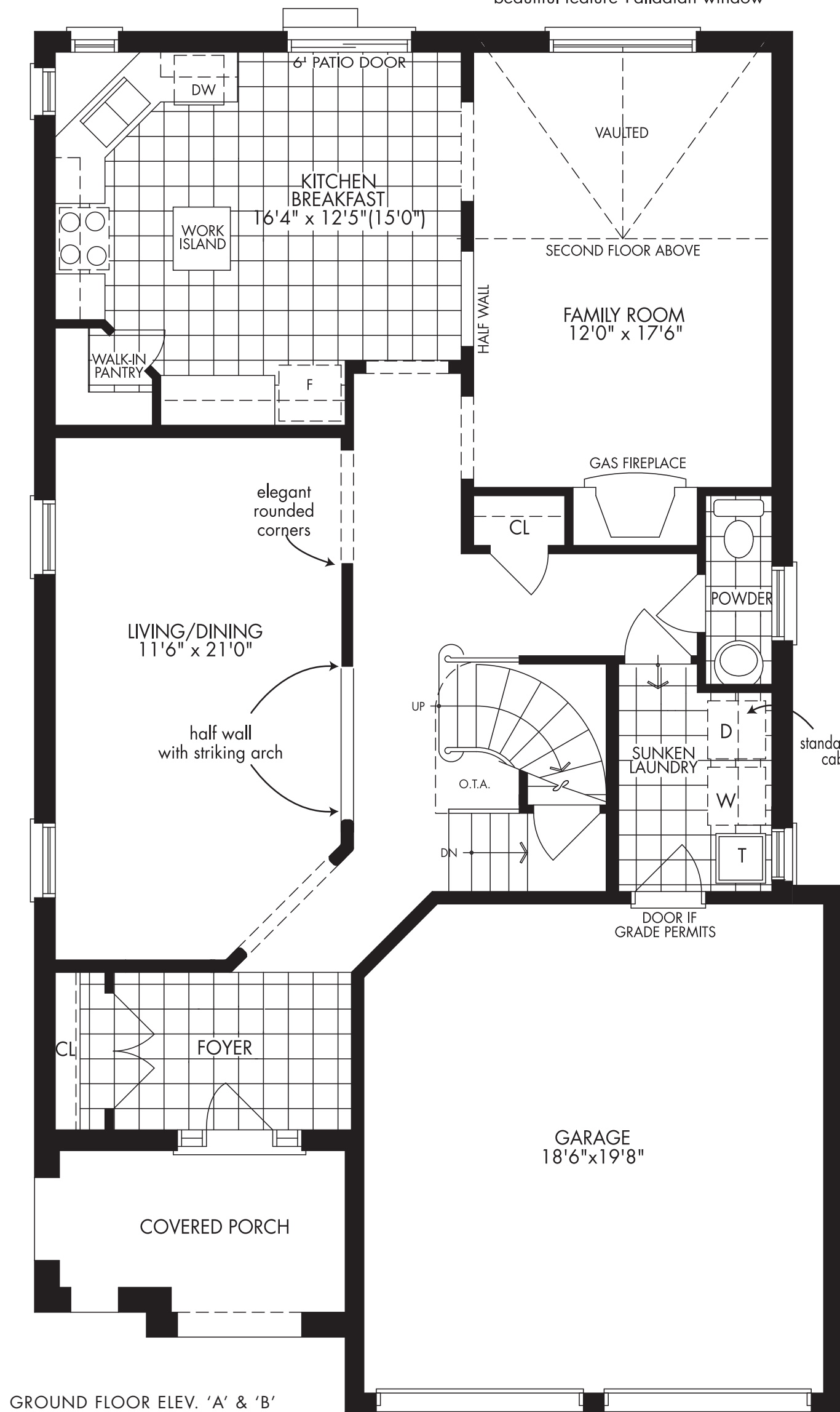
THE BRIGHTON

2540 SQUARE FEET

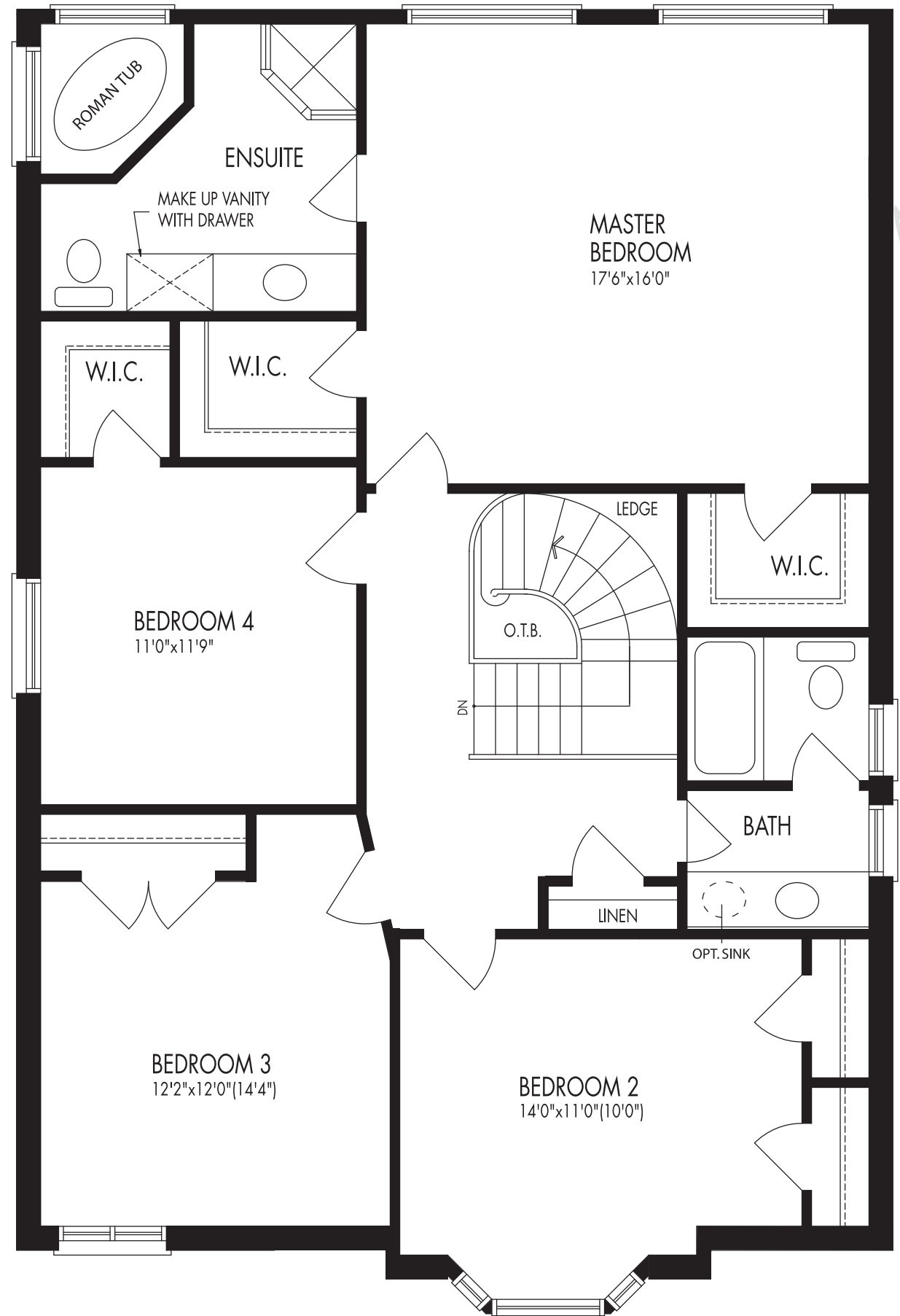
viewed from main level



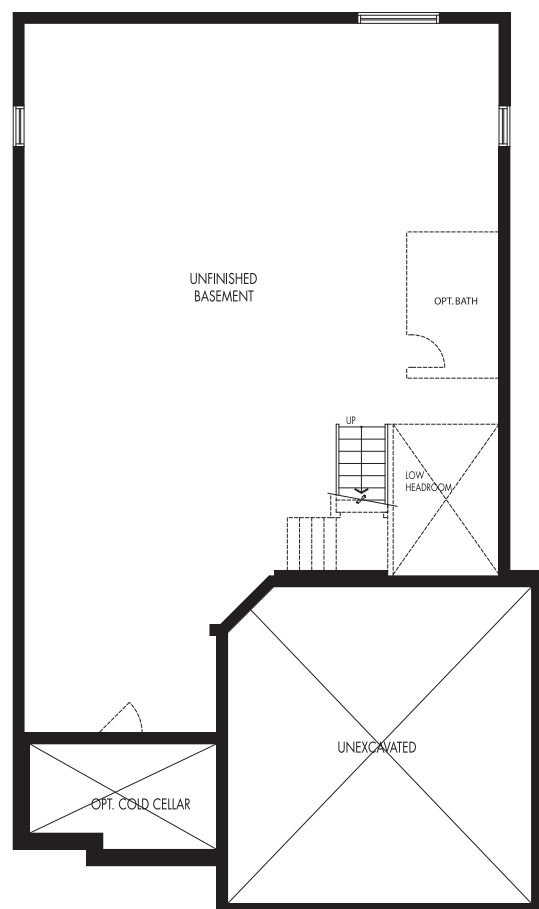
beautiful feature Palladian window



GROUND FLOOR ELEV. 'A' & 'B'



SECOND FLOOR ELEV. 'B'



LOWER LEVEL



The Brighton's design offers the best of formal and casual living in a well-planned family home. A generous foyer opens to a dramatic curved staircase and formal area. A traditional dining/living room enjoys an expansive view to the curved staircase and its sweeping landing. The kitchen is a cook's delight with a two corner windows, walk-in pantry and plenty of workspace on the centre island. Entertaining is a pleasure with a large eating area and garden access. The family room is a generous size with half walls providing an open, airy connection to the kitchen. A gas fireplace makes the room cozy and inviting. Laundry, storage, mudroom, powder room are all conveniently located on this main level.

Upstairs, you'll find a generous plan to please a busy family. A four bedroom plan, The Brighton features a sumptuous Master Retreat with all the features you'd expect from a hotel suite: His and Hers walk-in closets, large ensuite with make-up vanity and Georgian trimmed Roman tub and separate shower. Bedrooms 2, 3 and 4 enjoy generous proportions, ample closets and a shared family bath.

Lower Level: There's plenty of room and design options for your dream basement. Consider a future Recreation Room. Billiards. Media Centre. Guest suite. Hobby room. Exercise Room. Wine Cellar. Each plan has the flexibility to grow with your lifestyle needs.

Unmistakably Jeffery!

